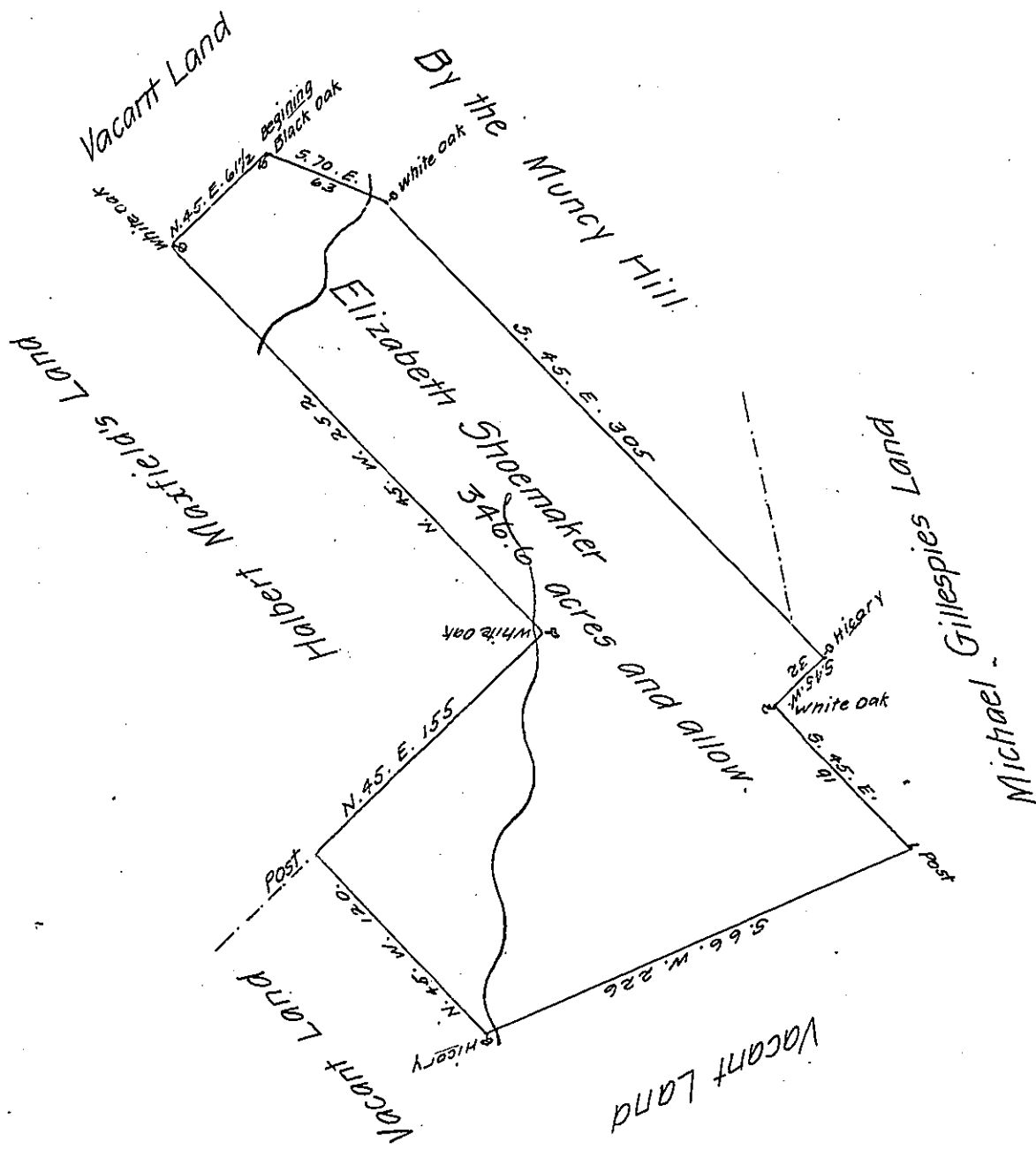


FORM No. 1.



The Draught of a Tract of Land called _____ situate on the
 Head Waters of Chillisquaque—at the Foot of Muncy Hill in the County of
 Northumberland containing Three Hundred Forty Six acres 115 perches
 with the usual allowance of Six Acres pCent for Roads. Survey'd the 7th
 day of August Anno Dom. 1772 In Pursuance of a Warrant from the Honble Pro-
 prietaries to Elizabeth Shoemaker Bearing Date at Philada^a the 21st. day of
 May Anno Dom. 1772.

p—Wm. Maclay D.S.

To John Lukens Esq. S.G. }
 of Pennsylvania }

IN TESTIMONY that the above is a copy of the original remaining on file in
 the Department of Internal Affairs of Pennsylvania, made
 conformably to an Act of Assembly approved the 16th day of
 February, 1833, I have hereunto set my Hand and caused
 the Seal of said Department to be affixed at Harrisburg,
 this second day of November 1906

Isaac R. Brown
 Secretary of Internal Affairs.